

# MONTHLY MEMBERSHIP PROGRESS REPORT

District 3234D1

Results as of: 5/31/2024

GMT:

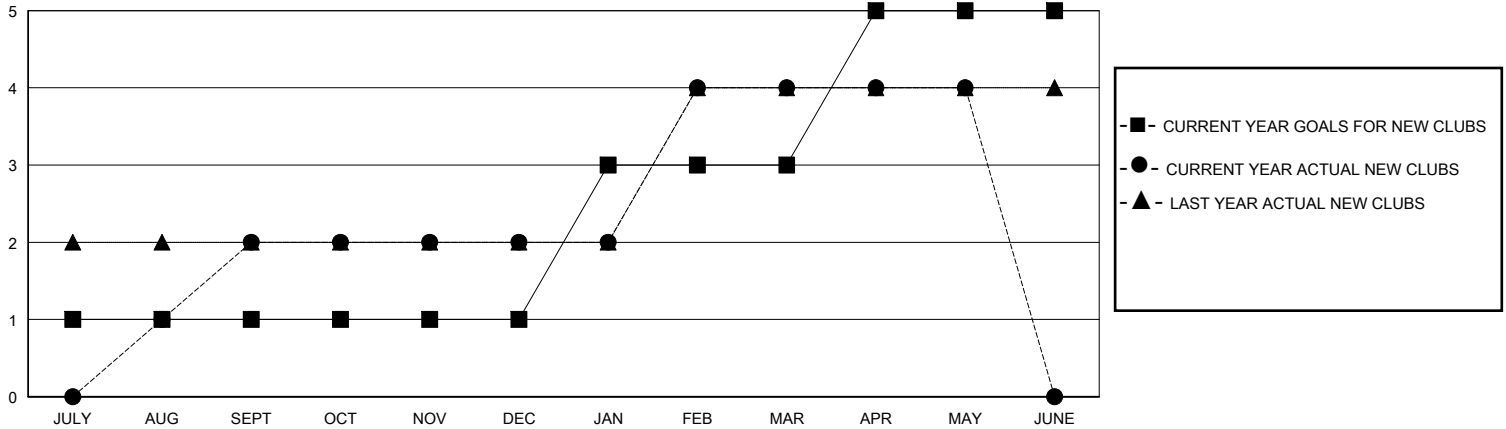
LOCATION INDIA

GMT CA

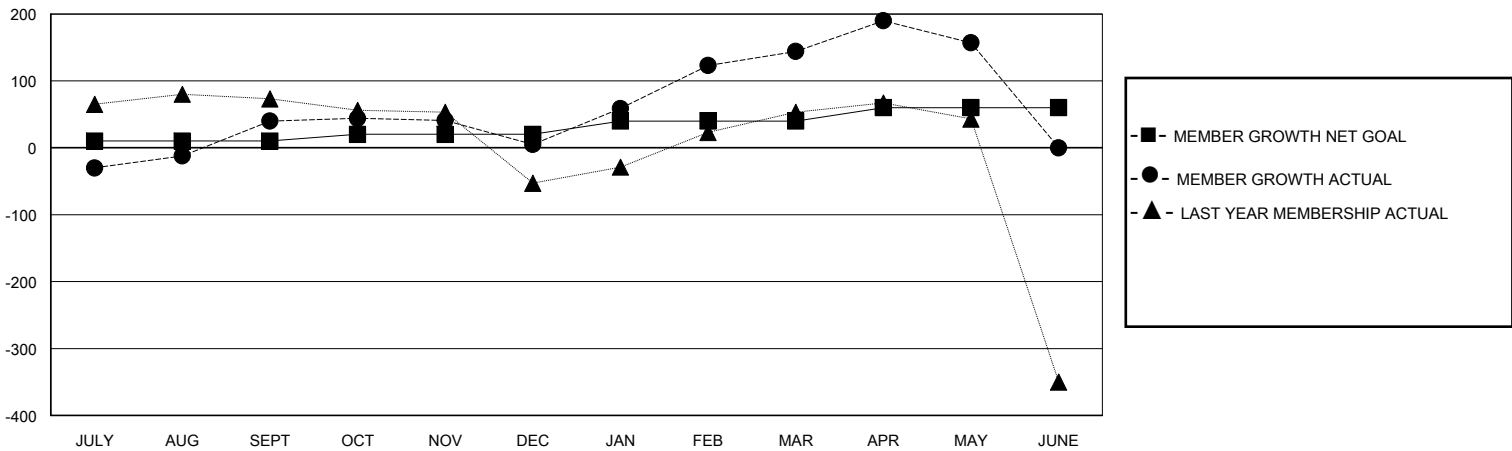
Clubs			
RESULTS FOR 2023-2024			
QUARTER	NEW CLUB GOAL	NEW CLUBS	DROPPED CLUBS
JULY/AUG/SEPT	1	2	2
OCT/NOV/DEC	0	0	3
JAN/FEB/MAR	2	2	0
APR/MAY/JUNE	2	0	1

Members			
RESULTS FOR 2023-2024			
QUARTER	MEMBER GROWTH NET GOAL	MEMBER GROWTH ACTUAL	DROPPED MEMBERS ACTUAL (including transfers)
JULY/AUG/SEPT	10	171	106
OCT/NOV/DEC	10	69	102
JAN/FEB/MAR	20	151	6
APR/MAY/JUNE	20	135	118

GOALS AND ACTUAL NEW CLUBS CUMULATIVE



GOALS AND ACTUAL MEMBERS CUMULATIVE



DROPPED CLUBS: 6	59 CLUBS OF 84 ADDED 1 OR MORE NEW MEMBERS	<b>GENDER DISTRIBUTION</b> MALE 1,925 (70.23%) FEMALE 816 (29.77%)
<b>DROPPED MEMBERS</b> DECEASED 9 CLUB CANCELLED 97 OTHER 226 TOTAL 332	<a href="#">CLICK HERE FOR CUMULATIVE MEMBERSHIP DATA</a>	TOTAL FAMILY UNIT MEMBERS 984 FAMILY MEMBERS PAYING HALF DUES 509